



## ROCKER SWITCHES



For more information see  
[www.hella.com/switch](http://www.hella.com/switch)



2



3



1

## The new waterproof 3100 series is the latest addition to the HELLA rocker switch series

**NEW**

The new generation of rocker switches is waterproof!

### 1 Series 3100

- Waterproof series of rocker switches for electrical systems
- Waterproof to protection class IP 68
- The lasered symbols are lit by integrated LEDs
- Future generation of switches CAN-/LIN-bus compatible



**Series 3100**  
from page 6

### 2 Series 4100

- Rocker switch series with self-cleaning contact system suitable for electrical and electronic systems
- Reliable switching of small currents without soiling the contacts
- Long service life
- Timeless design, with lasered symbols lit by integrated LEDs
- Future generation of switches CAN-/LIN-bus compatible



**Series 4100**  
from page 10

### 3 Series 4570/7832

- Basic program for simple electrical systems, well-tried for proven over more than 20 years
- Application for price-conscious consumers
- Symbol cards according to DIN standard or in the customer's choice of colors
- Pilot lighting realised by bulbs or LEDs (to be ordered separately)



**Series 4570/7832**  
from page 16

## The switch range

There are more than 500 different switch symbols available for all switch series.

Additional customer-specific symbols are also possible. Safe interpretation of the signals for every switch setting (colour specifications unless otherwise indicated):

- Green night-time illumination – for safe switching in all driving situations under extreme/different light conditions, especially at night.
- Red function monitor



Sample pictograms from the symbol range



## The new HELLA switch configurator



### HELLA rocker switch configurator

Configure your switches yourself! First, choose between the new waterproof 3100 series (indoor and outdoor applications) or the 4100 series (indoor applications).

You can select any switch function as well as the operating voltage, the combinations of symbols and the corresponding accessories with only a few clicks. They can easily be transferred to a favourites list, printed out or sent as an online request.

Your request will be processed individually with the desired symbol configuration and customer-specific article number on a project-specific basis.





## Switch series 3100

The new waterproof series of rocker switches for electrical systems. It meets the requirements of protection class IP 68. The lasered symbols are lit by integrated LEDs.



### Manifold lasered symbol disks

- IP 68 compliant with test standard IEC EN 60529
- Highly reliable even under extreme conditions
- Ideal for use in agricultural and construction machinery
- Wide range of switch functions for 12/24 V
  - N/O contact/changeover contact
  - Momentary-contact/maintained-contact switches
  - Locking functions
  - Hazard warning light switch
- Manifold standard and customer-specific laser symbols
- Specific symbol illumination by using one or two LEDs
- Easy to install, either directly in the mounting hole or using a modular mounting frame
- Display light in the same design for safety-related feedback





**TECHNICAL DATA**

Mounting hole	21.1 mm x 37.0 mm
Rocker material	Transparent polycarbonate, painted
Base plate material	PBT
Blade terminals	6.3 mm x 0.8 mm
Terminal material	CuZn silver-plated
Light source	Up to two LEDs, one pilot lighting, green 1 x function light, red Display lights available in amber and green
Symbol type	lasered
Design life	150,000 switching cycles with 6 A / 24 V
IP-rating	IP 68 terminal side: IP 66
Operating temperature	-40°C to +85°C
Storage temperature	-40°C to +85°C
Dashboard thickness	For directly installed switches: 2 mm

**ACCESSORIES**

**Installation frame**

**Modular**

End piece, left, right	9AR 169 209-102/-107
Centre piece	9AR 169 208-102/-107

**Dummy cover**

9HB 172 229-102/-107

**Female connector housing**

Type I	8JD 010 076-102/-107
Type II	8JD 010 076-112/-117
Type III	8JD 010 076-122/-127

**Blade terminal female, 6.3 mm**

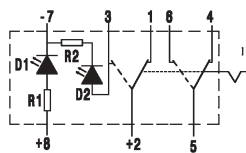
0.5 mm <sup>2</sup> – 1 mm <sup>2</sup>	8KW 744 882-003
1.5 mm <sup>2</sup> – 2.5 mm <sup>2</sup>	8KW 744 820-003

**Disassembly**

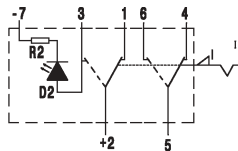
8PE 197 631-001

**SWITCH FUNCTIONS**

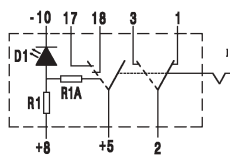
**Maintained-contact changeover contact, 1-stage, 2-pole**



Switch function -03  
with pilot lighting,  
with internal function lighting

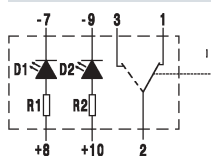


Switch function -04  
with internal function lighting,  
with lock



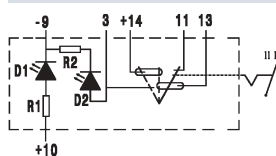
Switch function -08  
hazard warning light switch,  
with red pilot lighting,  
with internal function lighting

**Momentary-contact changeover contact, 1-stage, 1-pole**



Switch function -09  
with pilot lighting,  
with external function lighting

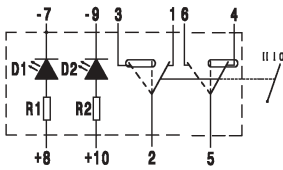
**Maintained-contact changeover contact, 2-stage, 1-pole**



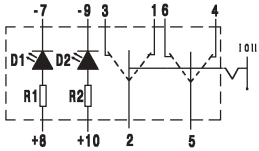
Switch function -07  
with pilot lighting,  
with internal function lighting



### Maintained-contact changeover contact, 2-stage, 2-pole

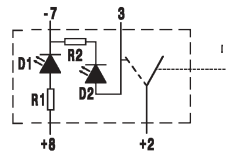


Switch function -11  
with pilot lighting,  
with external function lighting  
Stage I: maintained-contact  
Stage II: momentary-contact

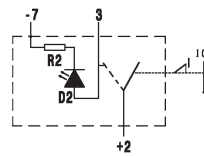


Switch function -15  
with pilot lighting,  
with external function lighting  
Switching stage I-0-II

### Momentary-contact NO contact, 1-stage, 1-pole

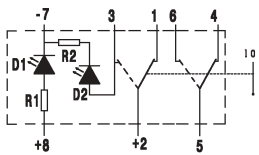


Switch function -00  
with pilot lighting,  
with internal function lighting

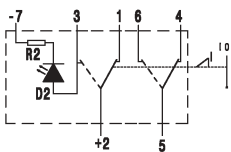


Switch function -01  
with internal function lighting,  
with lock

### Momentary-contact changeover contact, 1-stage, 2-pole

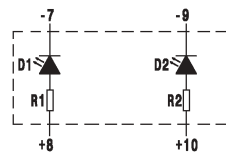


Switch function -05  
with pilot lighting,  
with internal function lighting

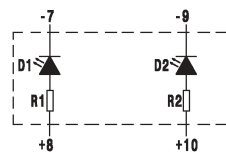


Switch function -06  
with internal function lighting,  
with lock

### Display lights

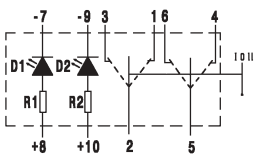


Switch function -13  
with external function lighting, 2-way,  
green



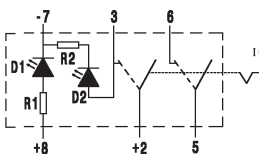
Switch function -14  
with external function lighting, 2-way,  
amber

### Momentary-contact changeover contact, 2-stage, 2-pole



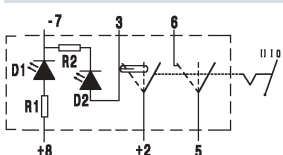
Switch function -12  
with pilot lighting,  
with external function lighting  
Switching stage I-0-II

### Maintained-contact N/O contact, 1-stage, 2-pole



Switch function -10  
with pilot lighting,  
with internal function lighting

### Maintained-contact N/O contact, 2-stage, 2-pole



Switch function -02  
with pilot lighting,  
with internal function lighting



## Switch series 4100

This rocker switch series with self-cleaning contact system suitable for modern electrical and electronic systems. It guarantees reliable switching of even small currents without soiling the contacts. This series offers a compelling and timeless design with lasered symbols lit by integrated LEDs.



### The strength of this range:

- Modular switch construction
- Realisation of a wide range of 12 V and 24 V switching functions:
  - N/O contact/changeover contact
  - Momentary-contact/maintained-contact switches
  - Locking function
  - Hazard warning light switch
- Manifold standard and customer-specific symbols
- Specific and reliable long-life symbol illumination by using up to four LEDs
- Easy to install, either directly in the mounting hole or using a modular mounting frame
- Display lights in the same design for safety-related feedback
- Modern and timeless design
- Pleasant haptics





#### TECHNICAL DATA

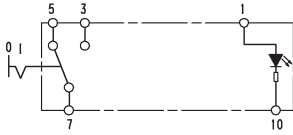
Mounting hole	19.8 mm x 41.8 mm
Rocker material	Transparent polycarbonate, painted
Base plate material	White PA, black PA housing
Blade terminal	3 mm Junior Power Timer
Terminal material	CuZn silver-plated
Light source	Up to four LEDs, two pilot lighting, green 2 x function light, red Display lights also available in blue and amber
Symbol type	lasered
Design life	450,000 cycles/5 mA 270,000 cycles/5 A / 24 V inductive 90,000 cycles / 4 A / 24 V bulb (75 W) 80,000 cycles / 10 A / 24 V resistive
IP-rating	IP 54
Operating temperature	-40°C to +85°C
Storage temperature	-40°C to +100°C
Dashboard thickness	For directly installed switches: 2 mm

#### ACCESSORIES

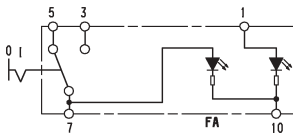
<b>Installation frame</b>	
One-way	9AR 168 396-002 / -007
<b>Modular</b>	
End piece, left	9AR 169 209-002 / -007
End piece, right	9AR 169 210-002 / -007
Centre piece	9AR 169 208-002 / -007
<b>Dummy cover</b>	9HB 172 229-002 / -007
<b>Female connector housing, 10-pole</b>	8JD 010 076-002 / -007
<b>Blade terminal female, 2.8 mm</b>	
Junior Power Timer 0.5 mm <sup>2</sup> – 1 mm <sup>2</sup>	8KW 863 934-003
Junior Power Timer 1.5 mm <sup>2</sup> – 2.5 mm <sup>2</sup>	8KW 863 934-023 / -024

SWITCH FUNCTIONS

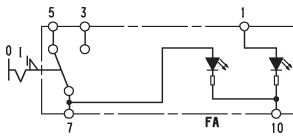
Maintained-contact changeover contact, 1-stage, 1-pole



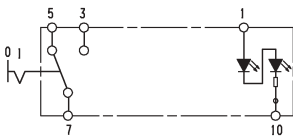
Switch function -00  
with pilot lighting



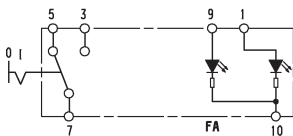
Switch function -01  
with pilot lighting,  
with internal function display



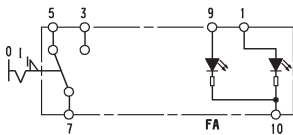
Switch function -02  
with pilot lighting,  
with internal function display,  
lock



Switch function -06  
with pilot lighting, 2-way

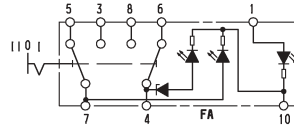


Switch function -08  
with pilot lighting,  
with external function display

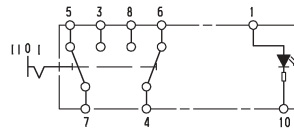


Switch function -09  
with pilot lighting,  
with external function display,  
lock

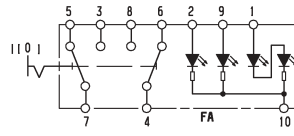
Maintained-contact changeover contact, 2-stage, 1-pole



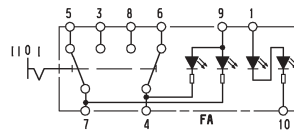
Switch function -18  
2 x 1-pole,  
with pilot lighting,  
with 2 internal function displays,  
1 x protective diode



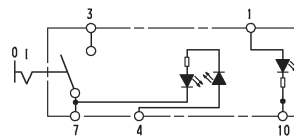
Switch function -19  
2 x 1-pole,  
with pilot lighting



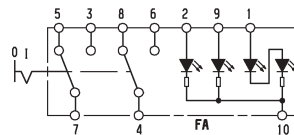
Switch function -21  
2 x 1-pole,  
with pilot lighting, 2-way,  
with 2 external function displays



Switch function -23  
2 x 1-pole,  
with pilot lighting, 2-way,  
with 2 internal function displays

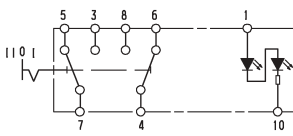


Switch function -25  
Hazard warning light switch,  
with pilot lighting,  
with 1 internal function display

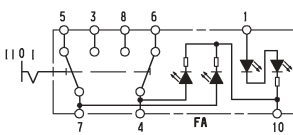


Switch function -30  
Hazard warning light switch,  
with pilot lighting,  
with 2 internal function displays

Maintained-contact changeover contact, 2-stage, 1-pole

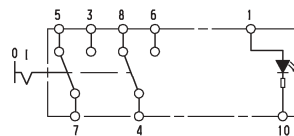


Switch function -14  
2 x 1-pole,  
with pilot lighting, 2-way

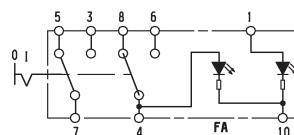


Switch function -16  
2 x 1-pole,  
with pilot lighting, 2-way  
with 2 internal function displays

Maintained-contact changeover contact, 1-stage, 2-pole

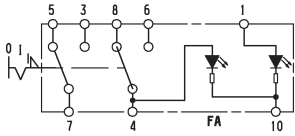


Switch function -03  
with pilot lighting

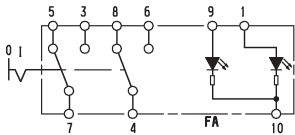


Switch function -04  
with pilot lighting,  
with 1 internal function display

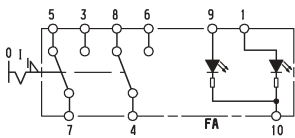
**Maintained-contact changeover contact, 1-stage, 2-pole**



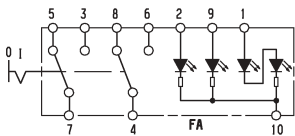
Switch function -05  
with pilot lighting, with 1 internal function display, lock



Switch function -11  
with pilot lighting, with 1 external function display

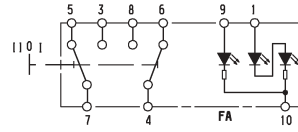


Switch function -12  
with pilot lighting, with 1 external function display, lock

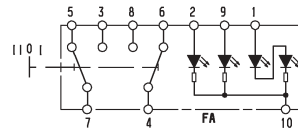


Switch function -13  
with pilot lighting, 2-way, with 2 external function displays

**Momentary-contact changeover contact, 2-stage, 1-pole**

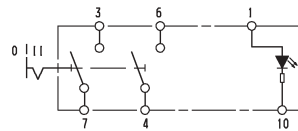


Switch function -20  
2 x 1-pole, with pilot lighting, 2-way, with 1 external function display  
I: maintained-contact  
II: momentary-contact



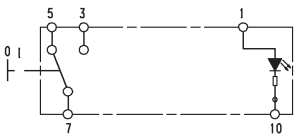
Switch function -22  
2 x 1-pole, with pilot lighting, 2-way, with 2 external function displays

**Maintained-contact N/O contact, 2-stage, 1-pole**

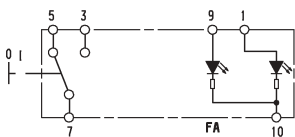


Switch function -24  
2 x 1-pole, with pilot lighting, Position I: 4-6, Position II: 4-6, 3-7

**Momentary-contact changeover contact, 1-stage, 1-pole**

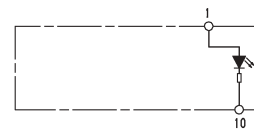


Switch function -07  
with pilot lighting

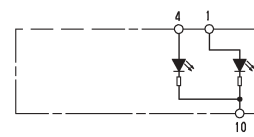


Switch function -10  
with pilot lighting, with 1 external function display

**Display light**

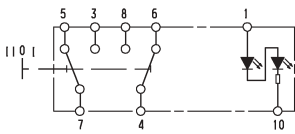


Light function -78  
for illumination symbol field 1, green

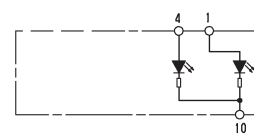


Light function -79  
for illumination symbol field 1 and 2, green

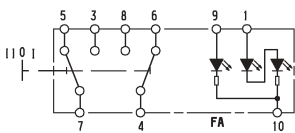
**Momentary-contact changeover contact, 2-stage, 1-pole**



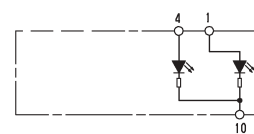
Switch function -15  
2 x 1-pole, with pilot lighting, 2-way



Light function -80  
for illumination symbol field 1 and 2, blue



Switch function -17  
2 x 1-pole, with pilot lighting, 2-way, with 1 external function display



Light function -81  
for illumination symbol field 1 and 2, amber

## EVE ONLINE TOOL

Experience HELLA's electrics and electronics range like never before!

[www.hella.com/eve](http://www.hella.com/eve)



[www.hella.com/eve](http://www.hella.com/eve)

Find out more about the HELLA switch range. Alongside the rocker switches, the product range contains a large number of vehicle-specific switches and universal switches, for example:

- Brake-light switches
- Oil pressure switches
- Thermal switches
- Reversing light switches



The HELLA product range includes a wide selection of different switches for the following types of vehicle: passenger cars, commercial vehicles, agricultural and construction machinery, as well as buses and coaches.

HELLA can supply you with switches for every function: on/off switches, pull switches for hazard warning systems and brake lights, light switches, alarm switches, power window switches, indicator switches, heat/starter switches, ignition switches, hazard warning switches, multi-function switches, battery disconnecting switches, foot and loading platform switches, pressure and plunger switches, air blower switches, switches for door contacts – in the form of toggle switches, rocker switches, with bulbs, screwed, clipped or with rotary action in black, silver, smooth or grained. Such a large selection for everything that can be switched on or off in a vehicle - and yet all our switches have one thing in common: **HELLA quality**





## Switch series 4570 / 7832

The basic program for simple electrical systems that has proven itself over more than 20 years. The symbol cards are available to DIN standard or in the customer's choice of colors. The symbols are lit by incandescent bulbs or LEDs, which can be ordered as accessories.



### Available with:

- Complete range of (standard and specified) automotive functions
- Single-stage and two-stage switches
- Momentary-contact or maintained-contact switches
- Effective locking system
- 12 V / 24 V voltage
- LED and incandescent bulb technology
- Manifold lock-in symbol disks
- Initial configuration and retrofitting thanks to standardised 41.1 x 22.1 mm mounting hole and mounting frame

### Comprehensive symbol range

A comprehensive range of symbols ensures that every important switch and monitoring function is marked correctly. All symbols can be realised. The switching and control displays can be illuminated. The product range also includes mounting rails which allow you to create switch series and combinations.



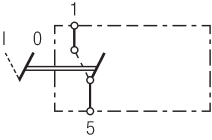


TECHNICAL DATA	
Mounting hole	22.1 mm x 44.1 mm
Rocker material 4570	PA6-GF30 / with red button: PA6
Rocker material 7832	PA6-GF30 / parts with button lock: PA6
Base plate material	POM
Housing material	Plastic, black, grained
Blade terminals	6.3 mm, DIN 46244
Light source	Bulb W5 / 1.2 12 V / 24 V, DIN 72601 LED 12 V – 32 V
Symbol type	Replaceable symbol cards
Design life 13.5 V	250,000 switching cycles at 6 A 150,000 switching cycles at 10 A 20,000 switching cycles at 16 A
Design life 27.5 V	150,000 switching cycles at 3 A 100,000 switching cycles at 5 A 20,000 switching cycles at 8 A
Protection class	Suitable for indoor use
Operating temperature	-35°C to +65°C
Storage temperature	-40°C to +90°C
Dashboard thickness	1 mm – 2.5 mm

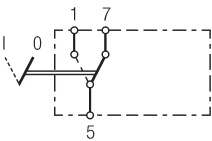
ACCESSORIES	
<b>Bulb sockets</b>	
with 12 V bulb	9FF 713 627-001
with 24 V bulb	9FF 713 627-011
with 12 V – 32 V LEDs, Ø 5 mm	9FF 713 627-031
<b>Installation frame</b>	
Three-way	8HG 714 504-001
Six-way	8HG 713 626-001
<b>Modular</b>	
End piece, left, right	8HG 716 734-001 / -007
Centre piece	8HG 716 735-001 / -007
<b>Dummy cover</b>	9HB 713 629-001 / -007
<b>Female connector housing</b>	
8-pole	8JA 713 631-001
2-pole	8JA 715 600-001
<b>Display lights for switch series 004 570-...</b>	
with 12 V bulb	2AA 713 628-001
with 24 V bulb	2AA 713 628-011
with 12 V and 24 V LEDs	2AA 713 628-051
<b>Display lights for switch series 007 832-...</b>	
with 12 V bulb	2AA 713 628-021
with 24 V bulb	2AA 713 628-031
with 12 V and 24 V LEDs	2AA 713 628-041
<b>Blade terminal female, 6.3 mm</b>	
0.5 mm <sup>2</sup> – 1 mm <sup>2</sup>	8KW 744 819-003
1.5 mm <sup>2</sup> – 2.5 mm <sup>2</sup>	8KW 701 235-033 / -034

## SWITCH FUNCTIONS

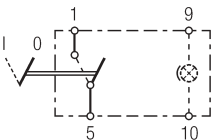
## Maintained-contact switch, 1-stage, 1-pole



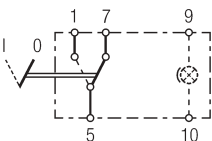
6EH 004 570-001  
6EH 007 832-001



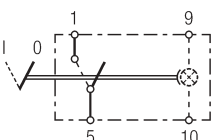
6FH 004 570-101  
6FH 007 832-051



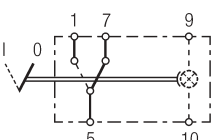
with pilot lighting  
6EH 004 570-011  
6EH 007 832-011



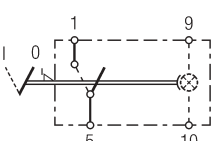
with pilot lighting  
6FH 004 570-111  
6FH 007 832-061



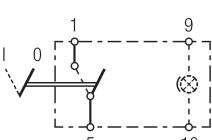
with pilot lighting and function lighting  
6EH 004 570-021  
6EH 004 570-027  
6EH 007 832-021  
6FH 004 570-777 (with gold-plated contacts)



with pilot lighting and function lighting  
6FH 004 570-121  
6FH 004 570-127  
6FH 007 832-081

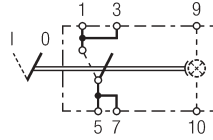


with pilot lighting and function lighting,  
actuation lock  
6EH 004 570-621  
6EH 007 832-041



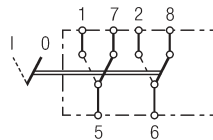
with pilot lighting and function lighting,  
gold-plated connections  
6FH 004 570-777

## Maintained-contact switch, 1-stage, 1-pole

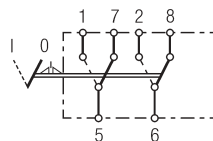


with pilot lighting and function lighting  
6EH 004 570-681  
6EH 007 832-611

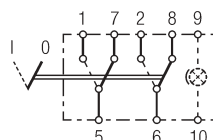
## Maintained-contact switch, 1-stage, 2-pole



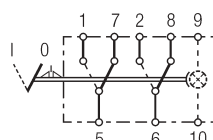
6FH 004 570-501  
6FH 007 832-121



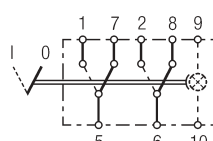
2 actuation locks  
6EH 004 570-631  
6EH 007 832-601



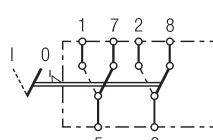
with pilot lighting  
6FH 004 570-341



with pilot lighting and function lighting,  
2 actuation locks  
6EH 004 570-641  
6EH 007 832-751

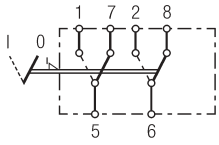


with pilot lighting and function lighting  
6FH 004 570-131  
6FH 004 570-137  
6FH 007 832-101

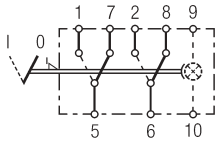


with actuation lock  
6RH 008 948-012

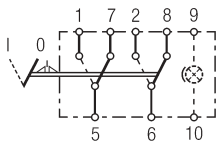
**Maintained-contact switch, 1-stage, 2-pole**



with actuation lock  
gold-plated connections  
6RH 008 910-011

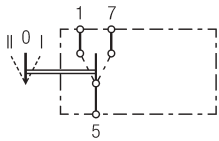


with pilot lighting and function lighting,  
actuation lock  
6EH 007 832-491

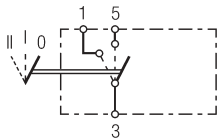


with pilot lighting,  
actuation lock  
6EH 007 832-671

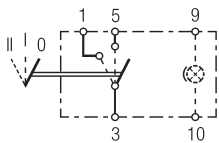
**Maintained-contact switch, 2-stage, 1-pole**



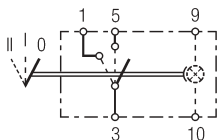
6FH 004 570-511  
6FH 004 570-517  
6FH 007 832-131



6RH 004 570-151  
6RH 007 832-331

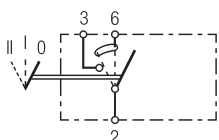


with pilot lighting  
6RH 004 570-161  
6RH 007 832-341



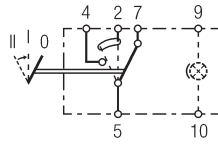
with pilot lighting and function lighting  
6RH 004 570-171  
6RH 004 570-177  
6RH 007 832-351

**Momentary-contact switch, combination switch, 2-stage, 1-pole**

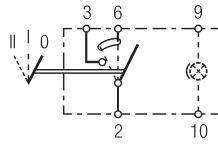


6RH 004 570-351  
6RH 007 832-431

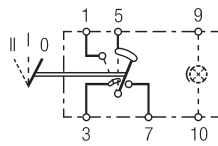
**Momentary-contact switch, combination switch, 2-stage, 1-pole**



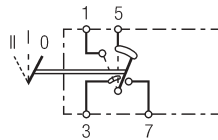
with pilot lighting,  
stage II: momentary-contact  
6RH 004 570-311  
6RH 007 832-411



with pilot lighting  
6RH 004 570-361  
6RH 007 832-441

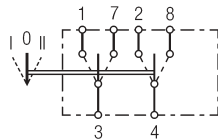


with pilot lighting  
6RH 004 570-261  
6RH 004 570-267  
6RH 007 832-391

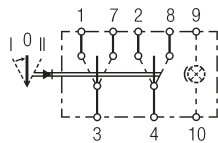


6FH 007 832-511

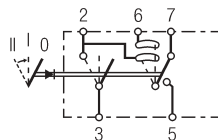
**Maintained-contact switch, combination switch, 2-stage, 2-pole**



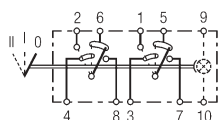
6FH 004 570-531  
6FH 007 832-161



with pilot lighting  
stage I: momentary-contact  
6RH 008 948-022

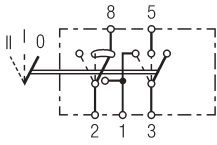


6RH 008 948-002  
stage II: momentary-contact

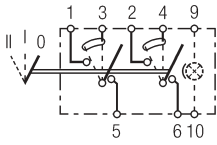


with pilot lighting and function lighting  
6RH 004 570-382

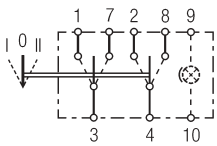
Maintained-contact switch, combination switch, 2-stage, 2-pole



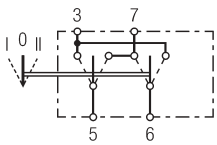
6RH 007 832-761



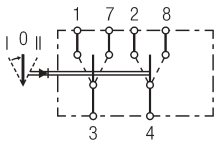
with pilot lighting  
6RH 007 832-681



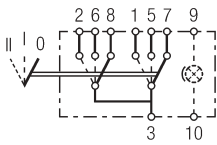
with pilot lighting 6FH 004 570-521  
6FH 007 832-151



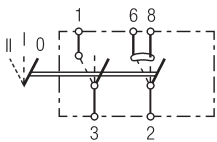
without lighting  
6RH 004 570-751  
6RH 007 832-481



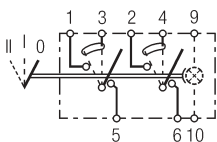
stage I: momentary-contact  
6RH 004 570-541  
6RH 007 832-171



with pilot lighting  
6RH 004 570-371  
6RH 007 832-701

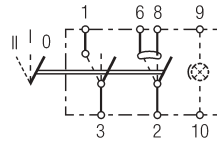


6RH 004 570-401  
6RH 007 832-451

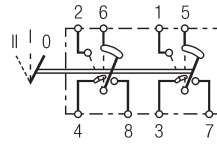


with pilot lighting and function lighting  
6RH 004 570-187  
6RH 004 570-787 (with gold-plated  
connections)  
6RH 007 832-377

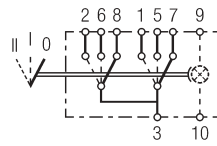
Maintained-contact switch, combination switch, 2-stage, 2-pole



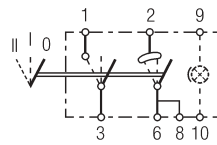
with pilot lighting 6RH 004 570-411  
6RH 004 570-417  
6RH 007 832-461



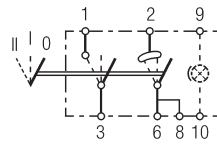
6RH 004 570-191  
6RH 007 832-381



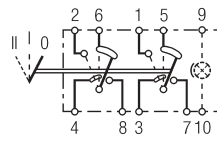
with pilot lighting and function lighting  
6RH 004 570-321  
6RH 007 832-731



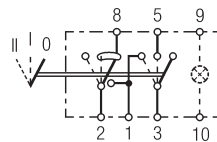
with pilot lighting and function lighting,  
gold-plated connections  
6RH 008 910-022



with pilot lighting and function lighting  
6RH 004 570-671  
6RH 004 570-041

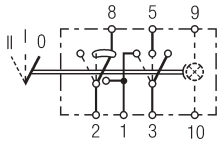


with pilot lighting  
6RH 007 832-741



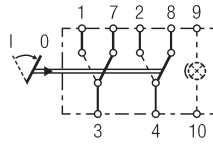
with pilot lighting  
6RH 008 910-032

**Maintained-contact switch, combination switch, 2-stage, 2-pole**



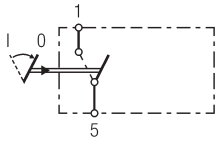
with pilot lighting and function lighting  
6RH 007 832-797

**Maintained-contact switch, 1-stage, 2-pole  
Momentary-contact switch, 1-stage, 2-pole**



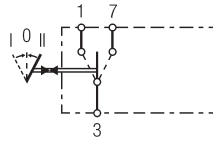
with pilot lighting  
6FH 004 570-571  
6FH 007 832-621

**Momentary-contact switch, 1-stage, 1-pole**

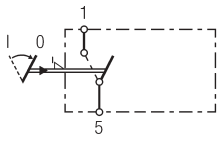


6GM 004 570-051  
6GM 007 832-181

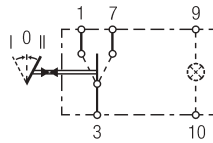
**Momentary-contact switch, 2-stage, 1-pole**



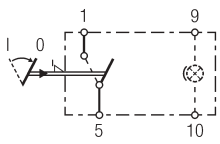
6GM 004 570-201  
6GM 007 832-231



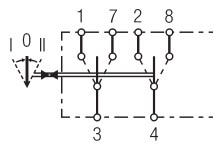
with actuation lock  
6GM 004 570-691  
6GM 007 832-581



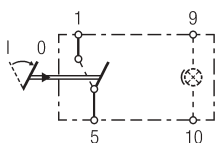
with pilot lighting  
6GM 004 570-211  
6GM 007 832-241  
6GM 004 570-797 (with gold-plated connections)



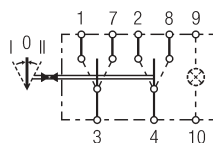
with actuation lock,  
with pilot lighting  
6GM 007 832-271



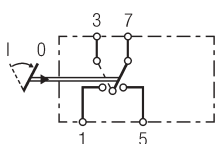
6GM 004 570-231  
6GM 007 832-251



with pilot lighting  
6GM 004 570-061  
6GM 004 570-067  
6GM 007 832-191  
6GM 004 570-767 (with gold-plated connections)

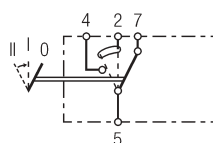


with pilot lighting  
6GM 004 570-221  
6GM 007 832-251

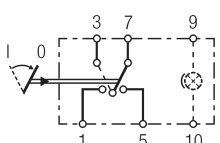


6GM 004 570-071  
6GM 007 832-211

**Momentary-contact switch, combination switch, 2-stage, 1-pole**

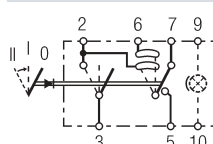


stage II: momentary-contact  
6RH 007 832-551



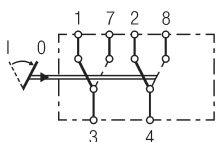
with pilot lighting  
6GM 004 570-081  
6GM 007 832-221

**Momentary-contact switch, combination switch, 2-stage, 2-pole**

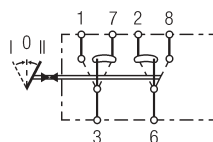


with pilot lighting  
stage II: momentary-contact  
6RH 004 570-331  
6RH 007 832-421

**Maintained-contact switch, 1-stage, 2-pole**

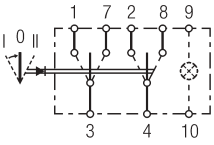


6GM 007 832-521

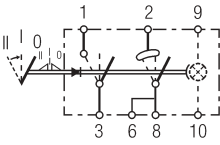


6GM 004 570-271  
6GM 007 832-631

**Momentary-contact switch, combination switch, 2-stage, 2-pole**

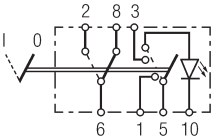


with pilot lighting,  
stage I: momentary-contact,  
stage II: maintained-contact  
6FH 004 570-241

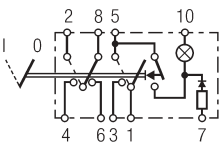


with pilot lighting and function lighting,  
stage II: momentary-contact,  
actuation lock  
6RH 007 832-651

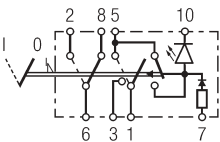
**Hazard warning light switch**



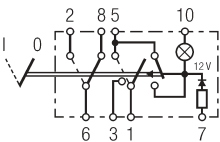
with LED, designed for  
function lighting  
6HH 004 570-431  
6HH 007 832-711



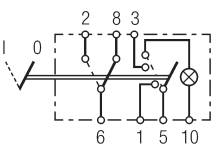
with 24 V bulb,  
with pilot lighting and function lighting  
6HH 004 570-481  
6HH 007 832-301



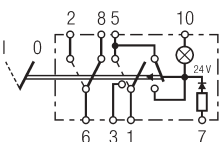
with LED,  
with pilot lighting and function lighting  
6HH 007 832-721



with 12 V bulb,  
with pilot lighting and function lighting  
6HH 004 570-491  
6HH 007 832-321  
6HH 007 832-807 (red button)

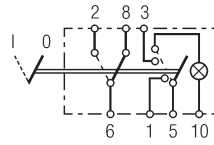


with 12 V bulb,  
with function lighting  
6HH 004 570-451  
6HH 007 832-281  
6HH 004 570-581 (red button)  
6HH 007 832-661 (red button)

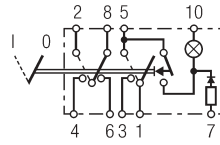


with 24 V bulb,  
with pilot lighting and function lighting  
6HH 004 570-477  
6HH 007 832-297

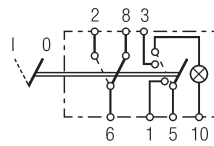
**Hazard warning light switch**



with 24 V bulb, red button,  
with function lighting  
6HH 004 570-591  
6HH 007 832-641



with 12 V bulb,  
with pilot lighting and function lighting  
6HH 007 832-771



with 24 bulb,  
with function lighting  
6HH 007 832-591

**HELLA KGaA Hueck & Co.**

Rixbecker Straße 75  
59552 Lippstadt, Germany  
Tel.: +49 2941 38-0  
Fax: +49 2941 38-7133  
Internet: [www.hella.com](http://www.hella.com)

**HELLA Limited**

Wildmere Industrial Estate  
Banbury, Oxon OX16 3JU  
Tel.: (01295) 225600  
Fax: 0800 7832571  
E-mail: [hella.sales@hella.com](mailto:hella.sales@hella.com)  
Website: [www.hella.co.uk](http://www.hella.co.uk)

**HELLA Ireland Limited**

Woodford Business Park  
Santry, Dublin 17  
Republic of Ireland  
Tel.: +353 (1) 8620000  
Fax: +353 (1) 8621133  
E-mail: [irlsales@hella.com](mailto:irlsales@hella.com)  
Website: [www.hella.ie](http://www.hella.ie)

© HELLA KGaA Hueck & Co., Lippstadt  
922 999 133-965 J00633/KB/05.13/0.6  
Printed in Germany



For more information see  
[www.hella.com/switch](http://www.hella.com/switch)